

## Online Supplementary Document

Krezanoski et al. Quantifying bias in measuring insecticide-treated bednet use: meta-analysis of self-reported vs objectively measured adherence

J Glob Health 2018;8:010411

### Table S1

#### Search terms

##### Pubmed:

("theory"[TIAB] OR "theoretical"[TIAB] OR "Health Services Needs and Demand"[MeSH Terms] OR "Behavior"[MeSH Terms] OR "use"[TIAB] OR "using"[TIAB] OR "uses"[TIAB] OR "usage"[TIAB] OR "non-use"[TIAB] OR "utilize"[TIAB] OR "utilizes"[TIAB] OR "utilization"[TIAB] OR "non-utilization"[TIAB] OR "hang"[TIAB] OR "hanging"[TIAB] OR "compliance"[TIAB] OR "non-compliance"[TIAB] OR "comply"[TIAB] OR "adhere"[TIAB] OR "adherence"[TIAB] OR "non-adherence"[TIAB] OR "uptake"[TIAB] OR "ownership"[TIAB] OR "own"[TIAB] OR "owning"[TIAB] OR "possession"[TIAB] OR "mount"[TIAB] OR "mounting"[TIAB] OR "coverage"[TIAB] OR "attrition"[TIAB] OR "persistence"[TIAB] OR "behaviors"[TIAB] OR "behavior"[TIAB] OR "motivation"[TIAB] OR "attitudes"[TIAB] OR "acquire"[TIAB] OR "obtain"[TIAB] OR "unfurl"[TIAB] OR "furl"[TIAB] OR "buy"[TIAB] OR "purchase"[TIAB] OR "seek"[TIAB] OR "demand"[TIAB] OR "demands"[TIAB] OR "demanding"[TIAB]) AND ("long-lasting insecticidal"[TIAB] OR "insecticide treated"[TIAB] OR "LLIN"[TIAB] OR "LLINS"[TIAB] OR "ITN"[TIAB] OR "ITNs"[TIAB] OR "bednet"[TIAB] OR "bednets"[TIAB] OR "bed net"[TIAB] OR "bed nets"[TIAB] OR "mosquito net"[TIAB] OR "mosquito nets"[TIAB] OR "netting"[TIAB] OR "Mosquito Nets"[MeSH Terms] OR "Insecticide-Treated Bednets"[MeSH Terms]) AND ("malaria"[MeSH Terms] OR "malaria"[TIAB])

##### Embase:

'malaria':ti,ab OR 'malaria':de AND ('long-lasting insecticidal':ti,ab OR 'insecticide treated':ti,ab OR 'llin':ti,ab OR 'llins':ti,ab OR 'itn':ti,ab OR 'itns':ti,ab OR 'bednet':ti,ab OR 'bednets':ti,ab OR 'bed net':ti,ab OR 'bed nets':ti,ab OR 'mosquito net':ti,ab OR 'mosquito nets':ti,ab OR 'netting':ti,ab) AND ('theory':ti,ab OR 'theoretical':ti,ab OR 'use':ti,ab OR 'using':ti,ab OR 'uses':ti,ab OR 'usage':ti,ab OR 'non-use':ti,ab OR 'utilize':ti,ab OR 'utilizes':ti,ab OR 'utilization':ti,ab OR 'non-utilization':ti,ab OR 'hang':ti,ab OR 'hanging':ti,ab OR 'compliance':ti,ab OR 'non-compliance':ti,ab OR 'comply':ti,ab OR 'adhere':ti,ab OR 'adherence':ti,ab OR 'non-adherence':ti,ab OR 'uptake':ti,ab OR 'ownership':ti,ab OR 'own':ti,ab OR 'owning':ti,ab OR 'possession':ti,ab OR 'mount':ti,ab OR 'mounting':ti,ab OR 'coverage':ti,ab OR 'attrition':ti,ab OR 'persistence':ti,ab OR 'behaviors':ti,ab OR 'behavior':ti,ab OR 'motivation':ti,ab OR 'attitudes':ti,ab OR 'acquire':ti,ab OR 'obtain':ti,ab OR 'unfurl':ti,ab OR 'furl':ti,ab OR 'buy':ti,ab OR 'purchase':ti,ab OR 'seek':ti,ab OR 'demand':ti,ab OR 'demands':ti,ab OR 'demanding':ti,ab) AND [embase]/lim

Figure S1

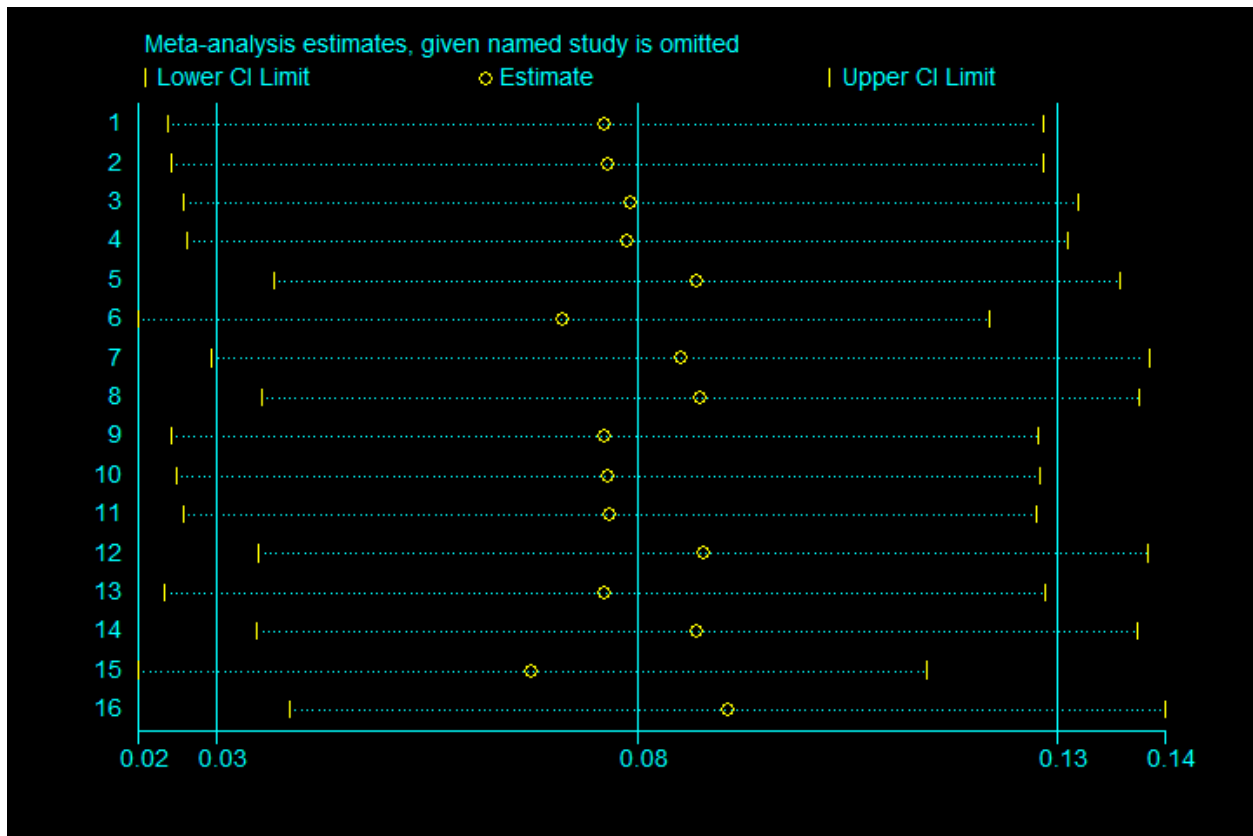


Figure S2

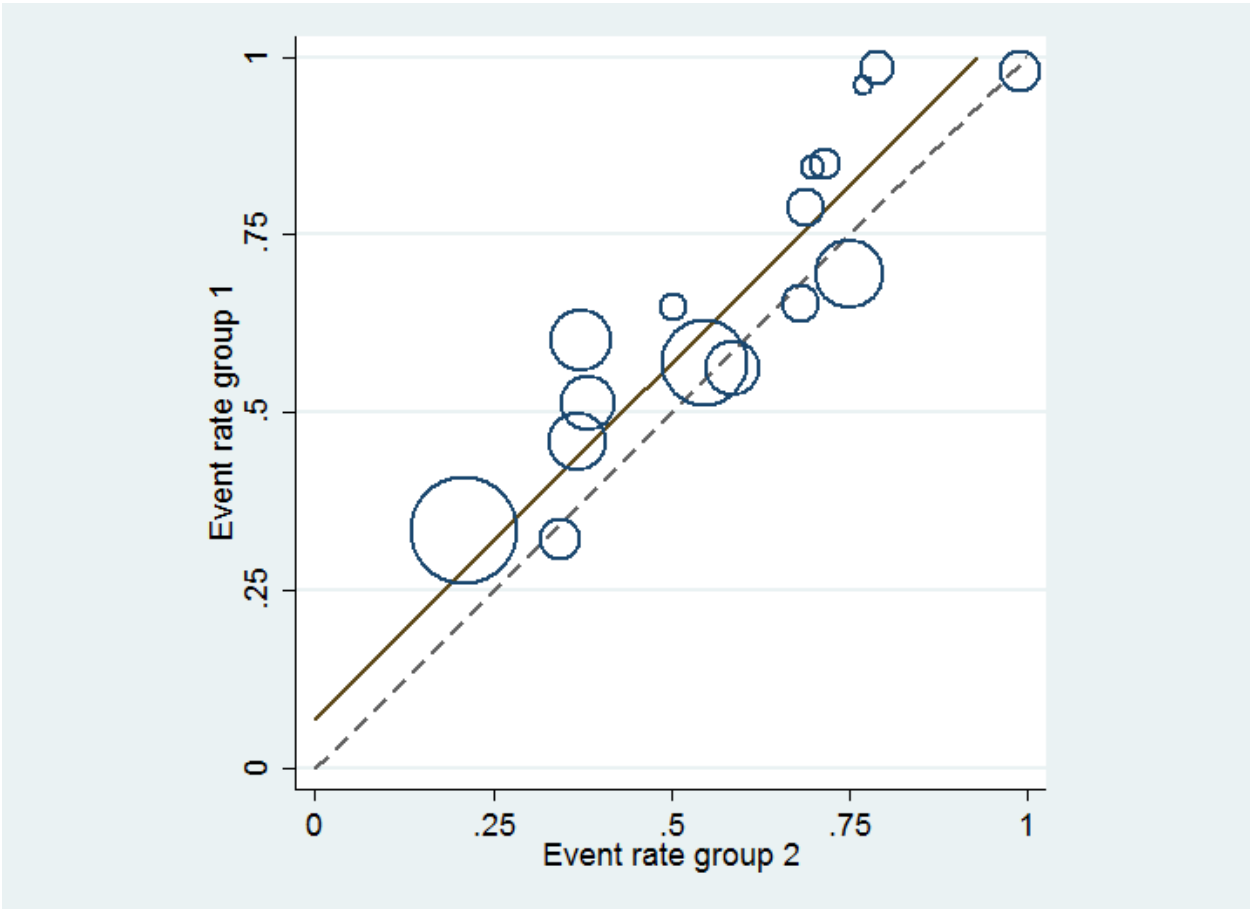


Figure S3

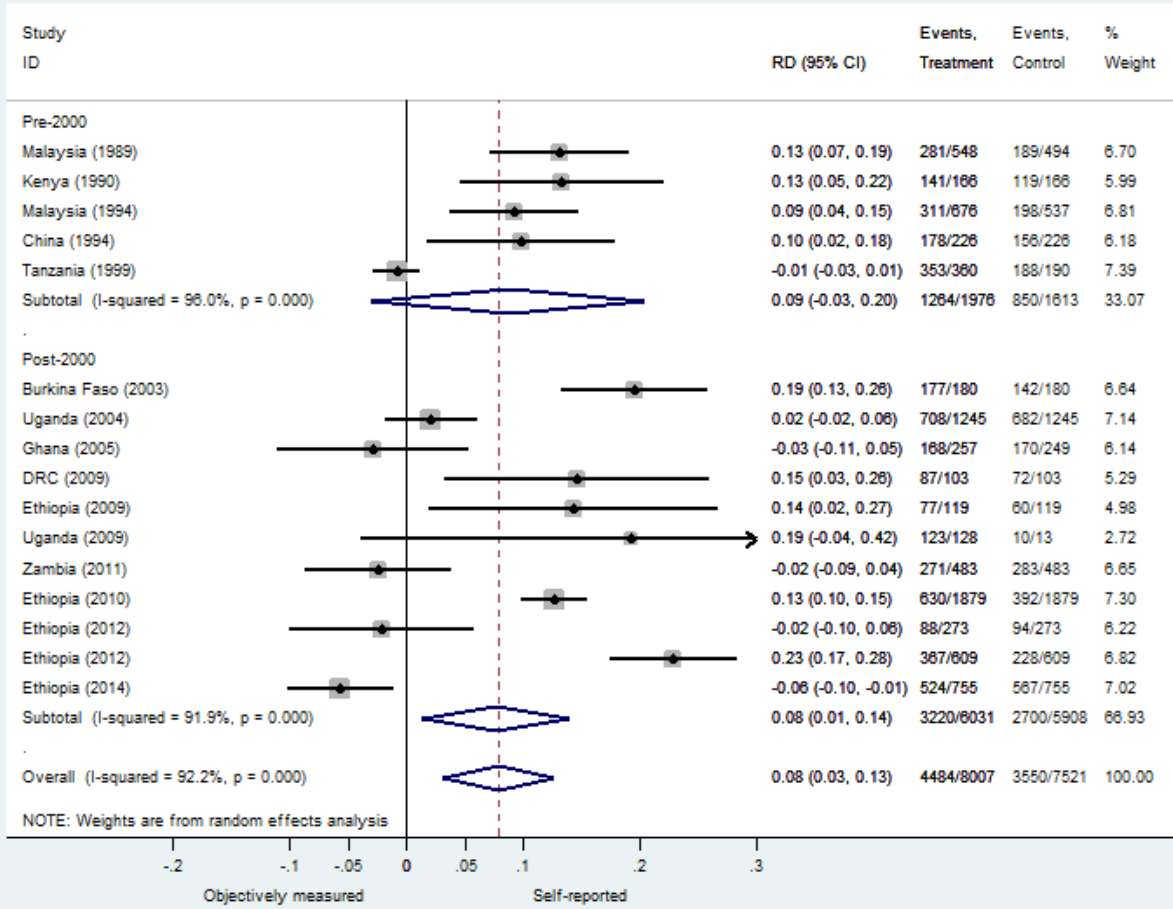


Figure S4

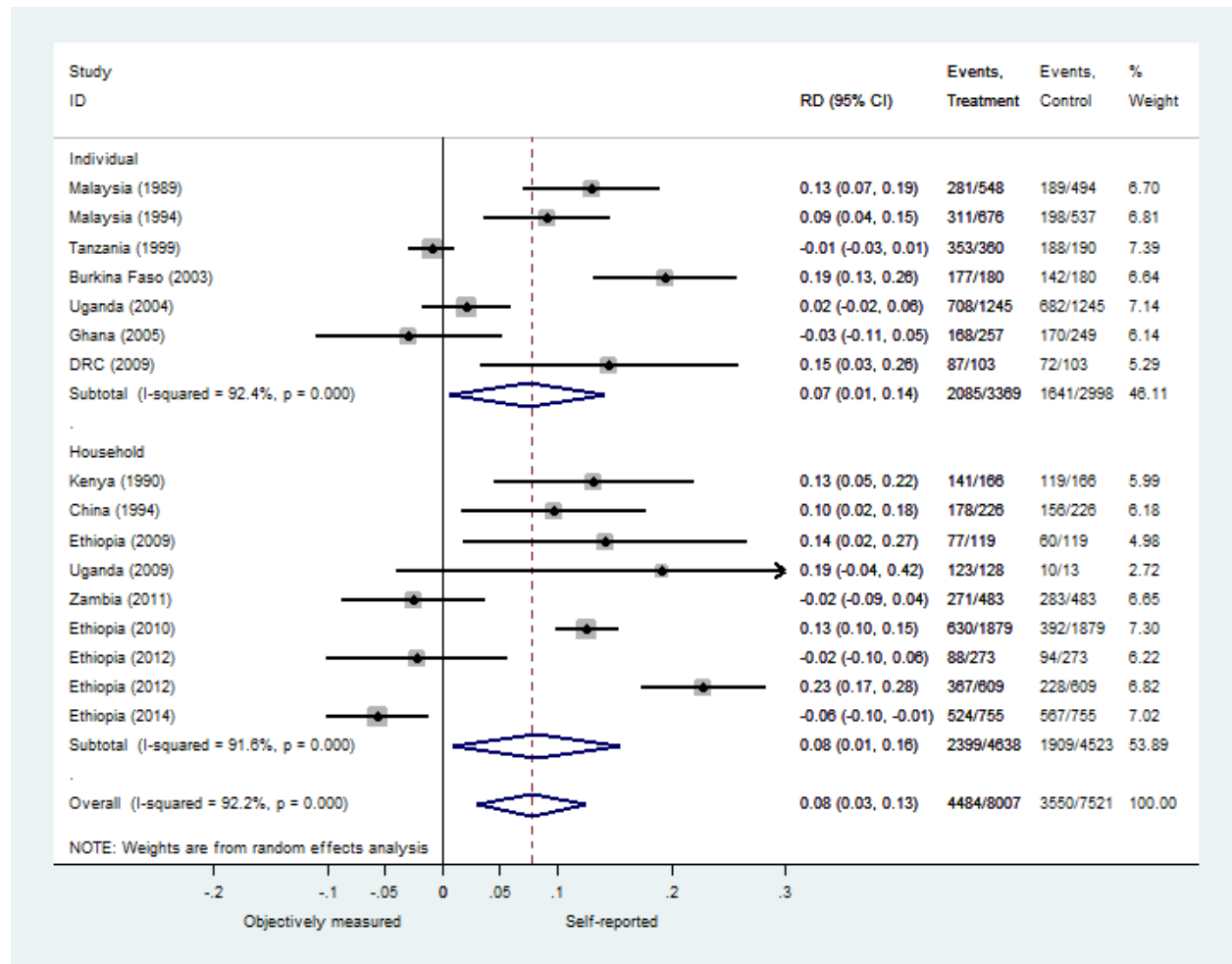


Figure S5

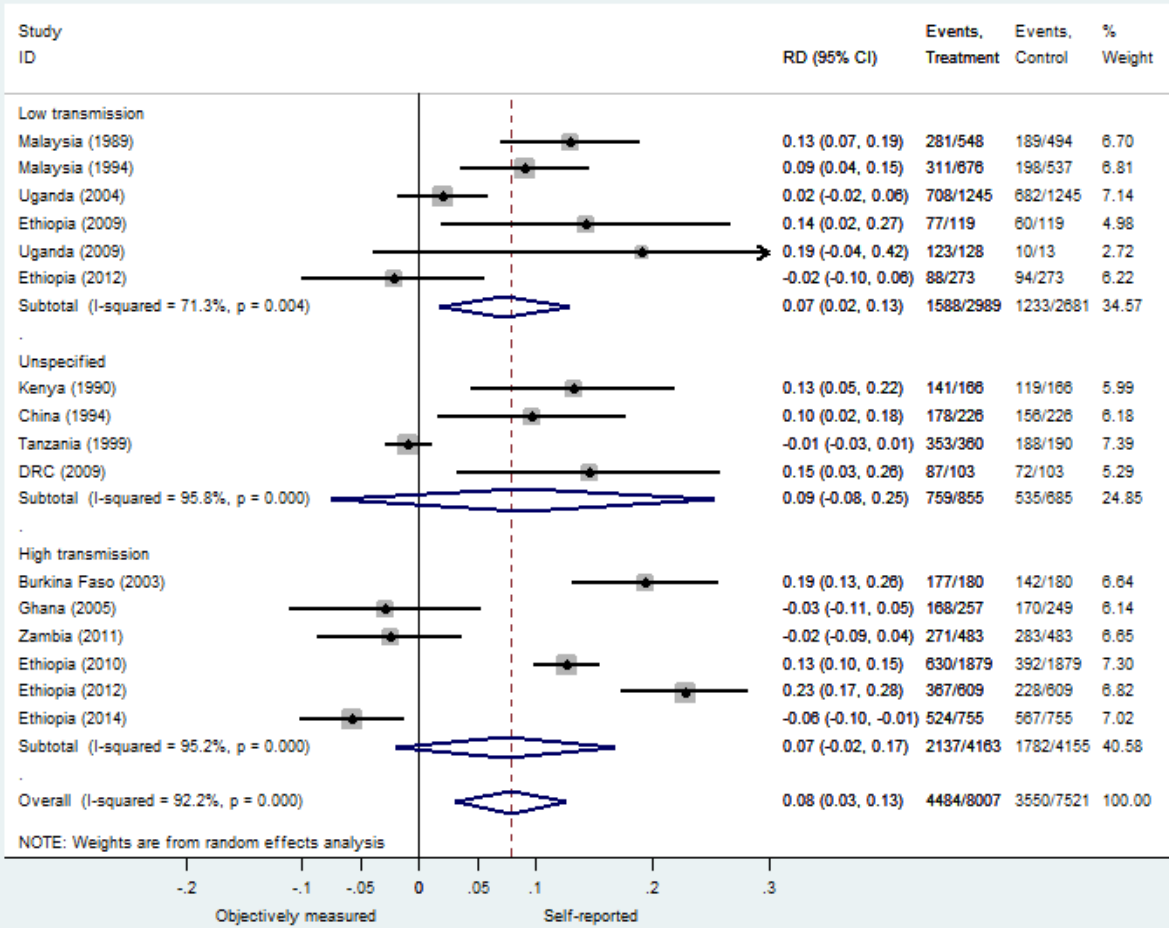


Figure S6

