

Online Supplementary Document

Amouzou et al. Measuring postnatal care contacts for mothers and newborns: An analysis of data from the MICS and DHS surveys

J Glob Health 2017;7:020502

A. Additional Results

Figure S1: Algorithm of Postnatal Health Checks in DHS phase 6

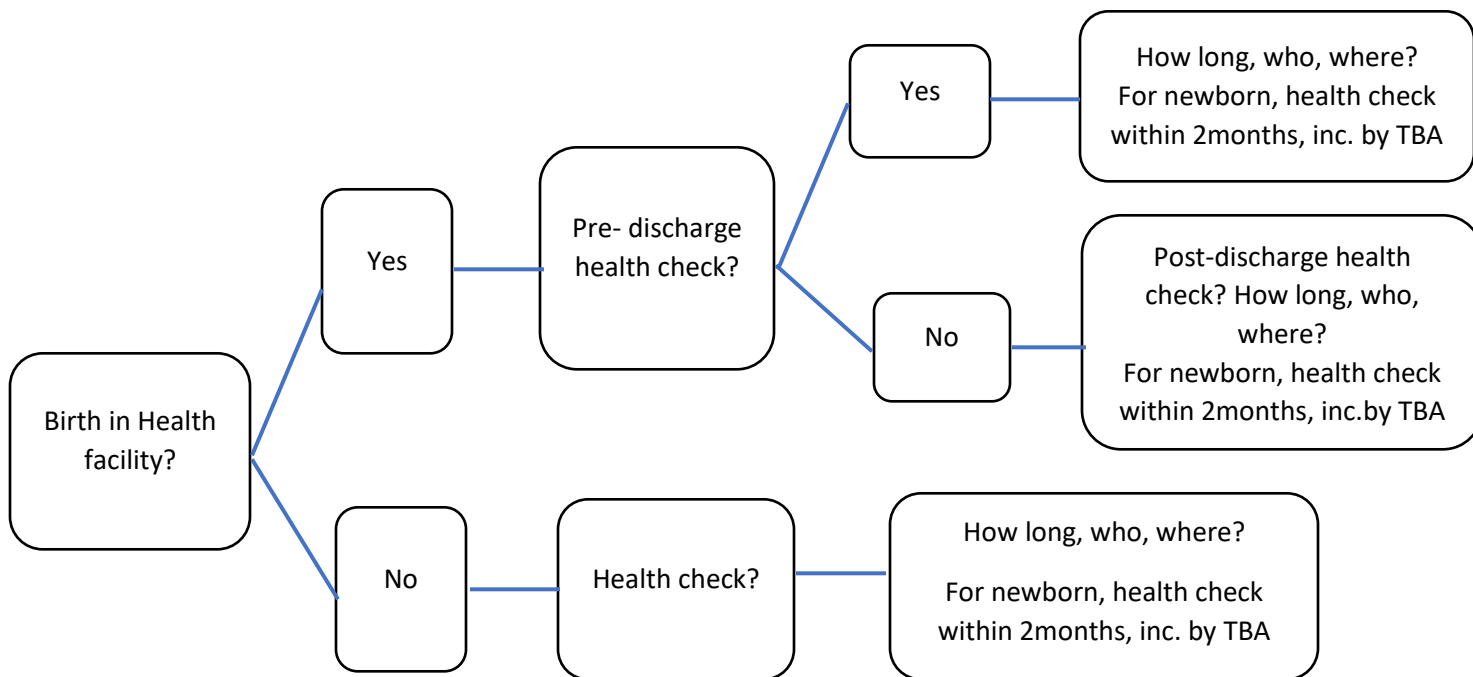
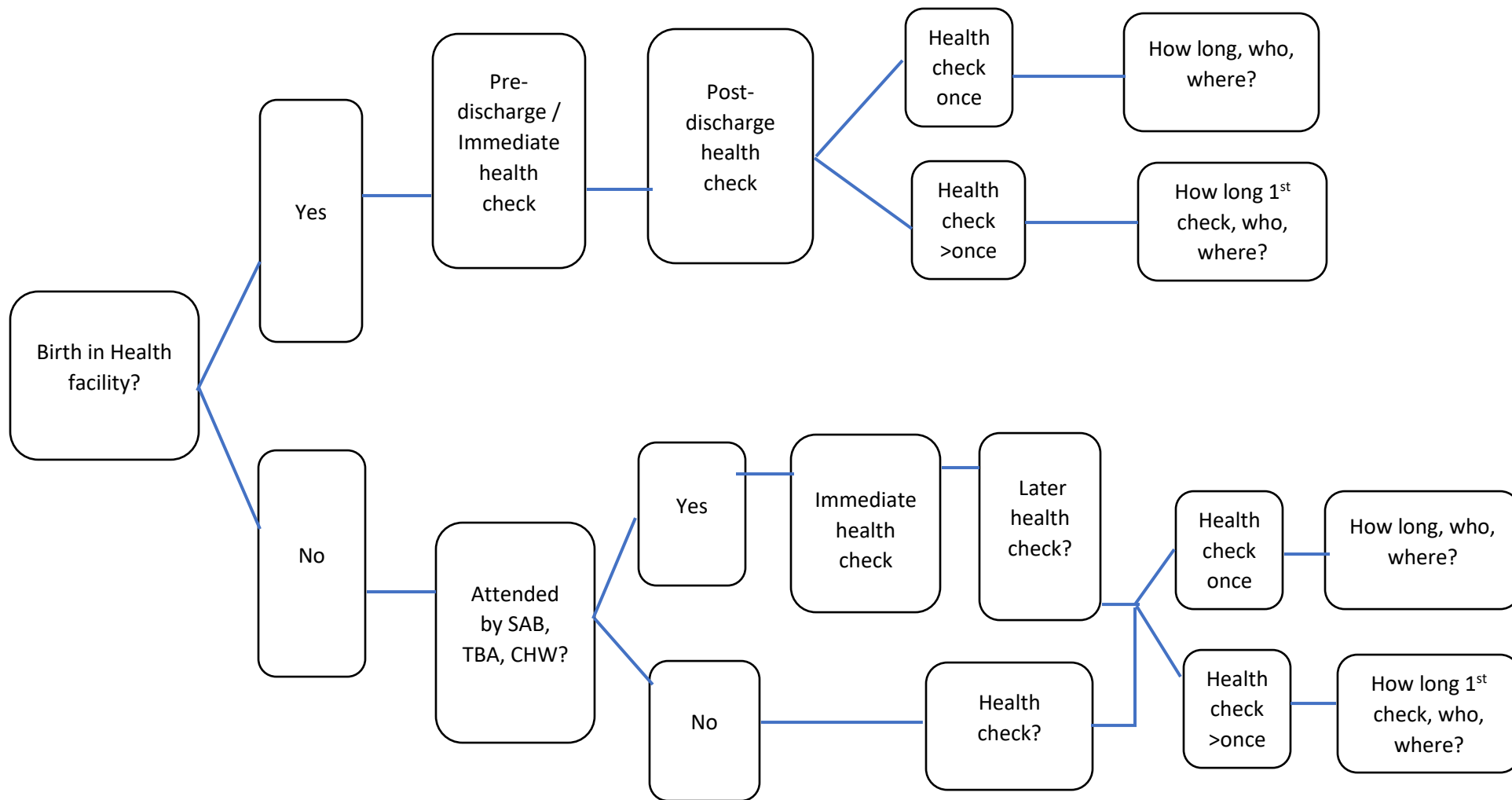
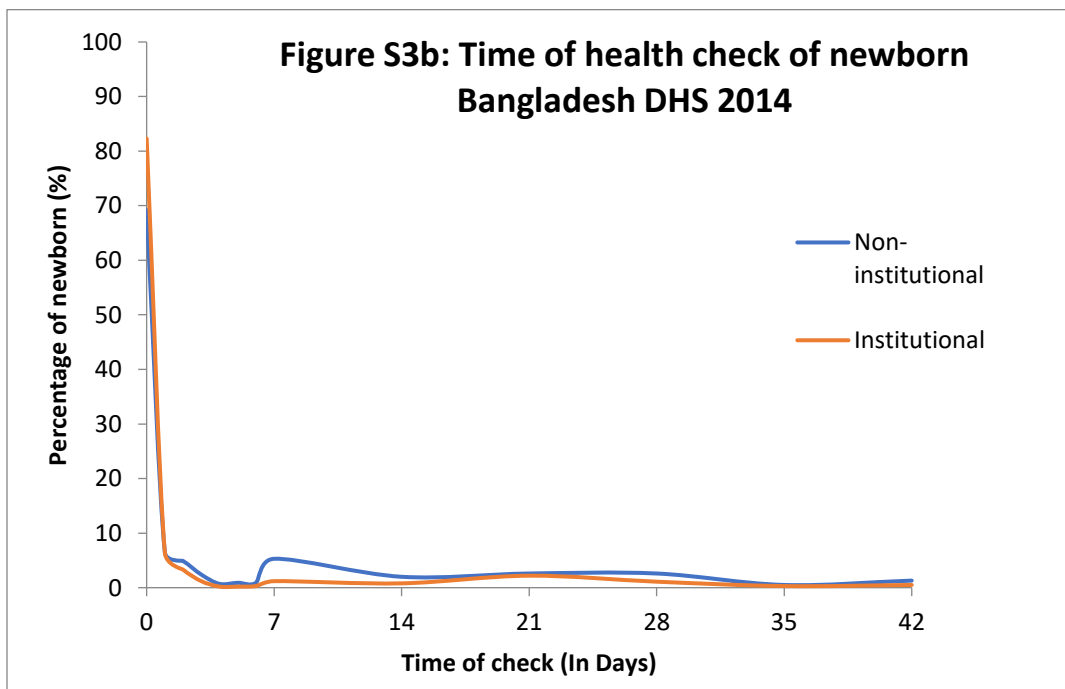
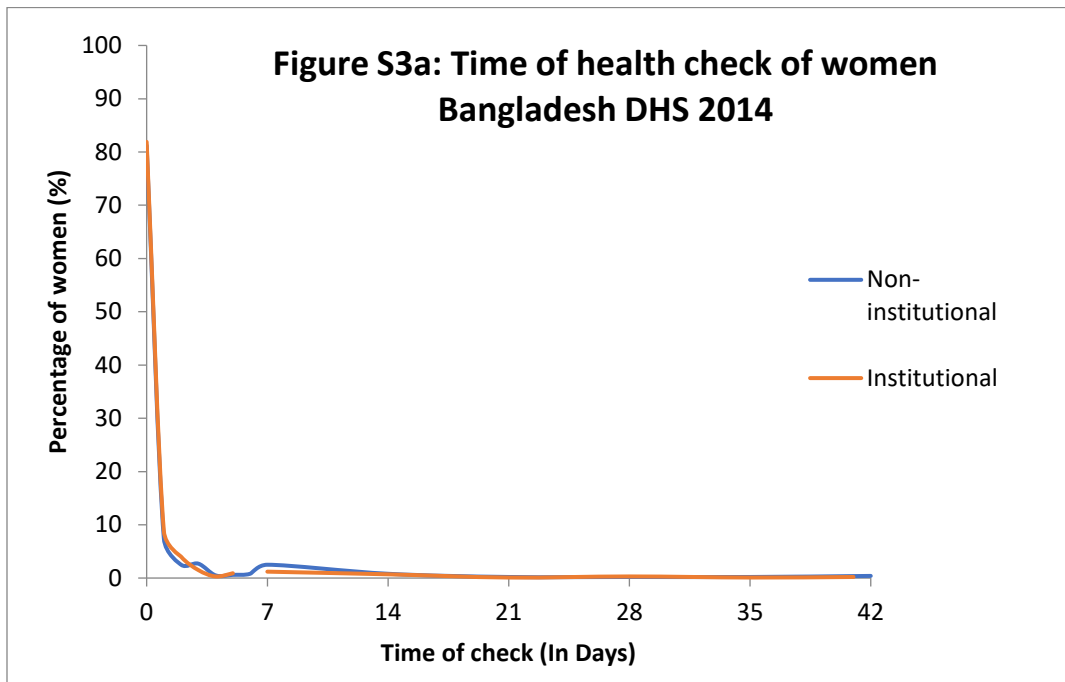
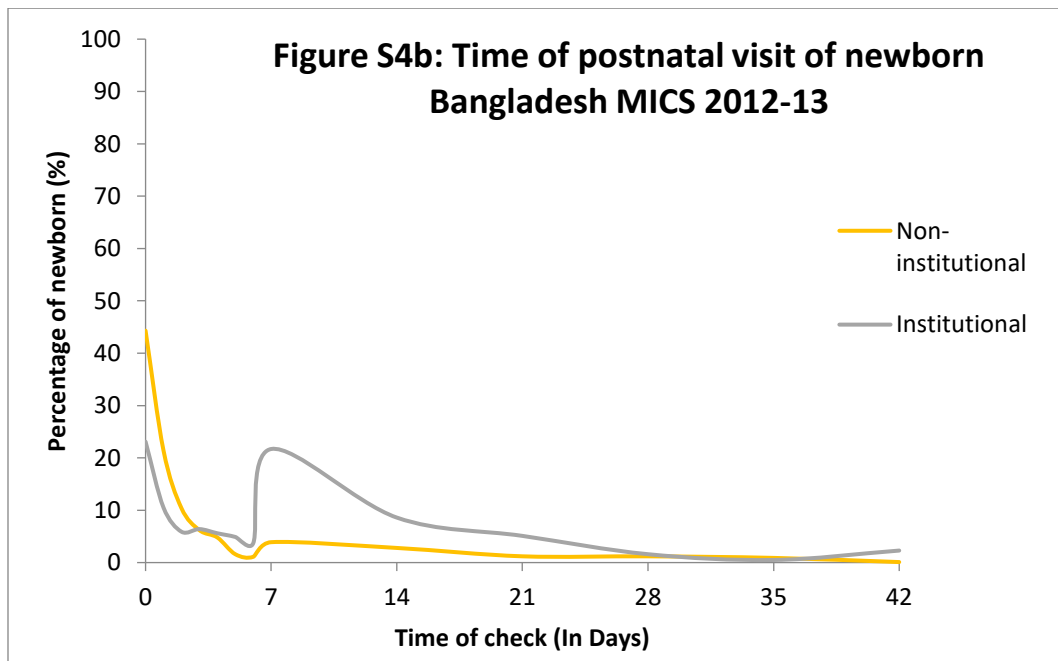
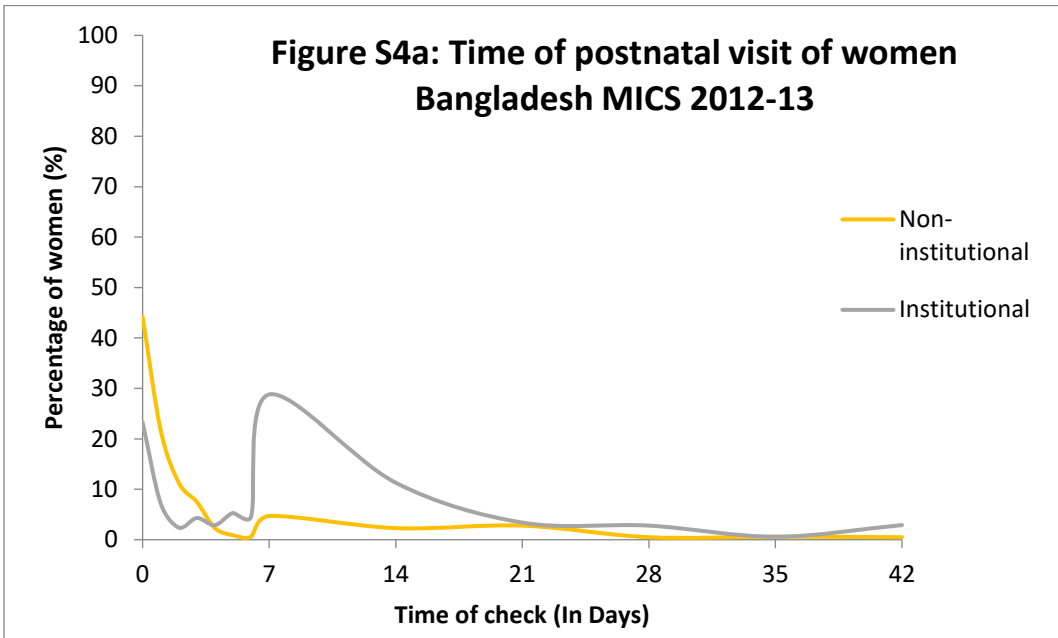
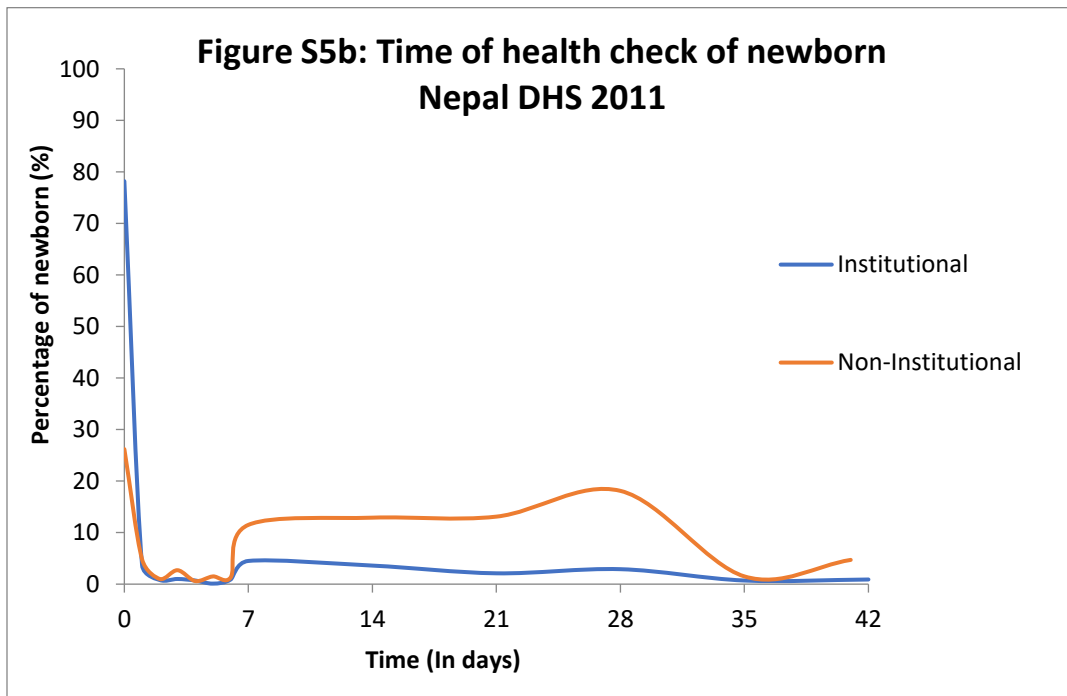
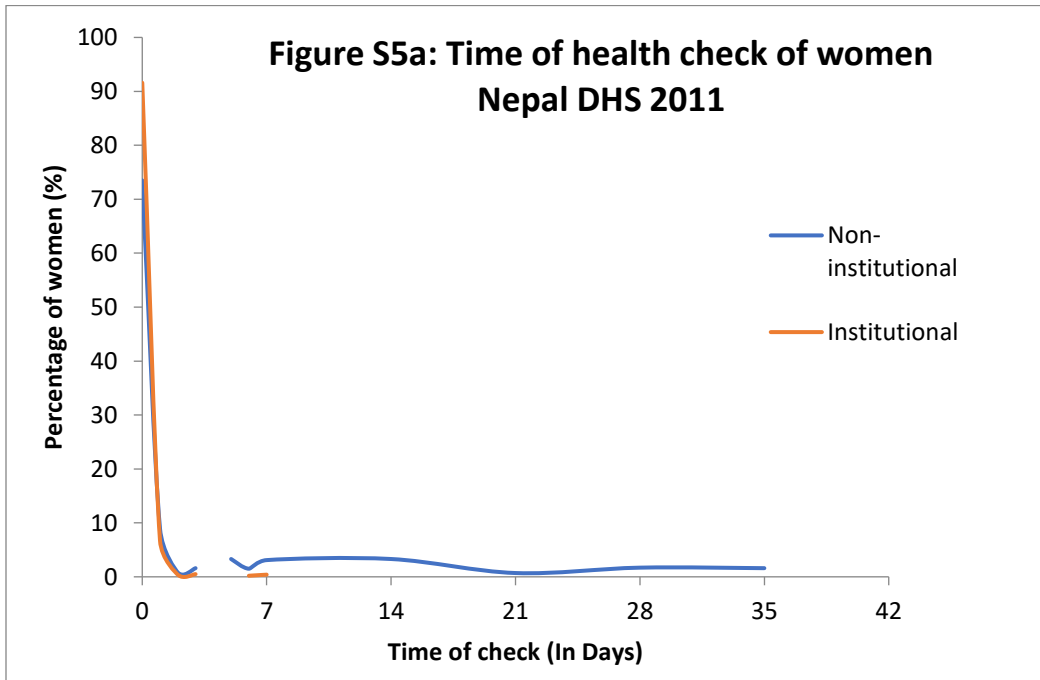


Figure S2: Algorithm of Postnatal Health Checks in MICS 5

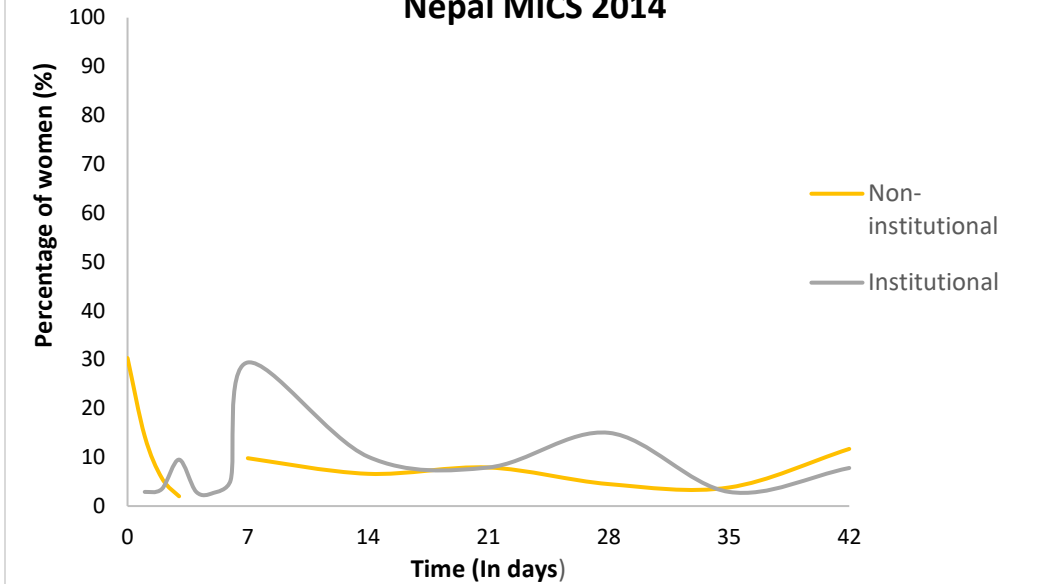




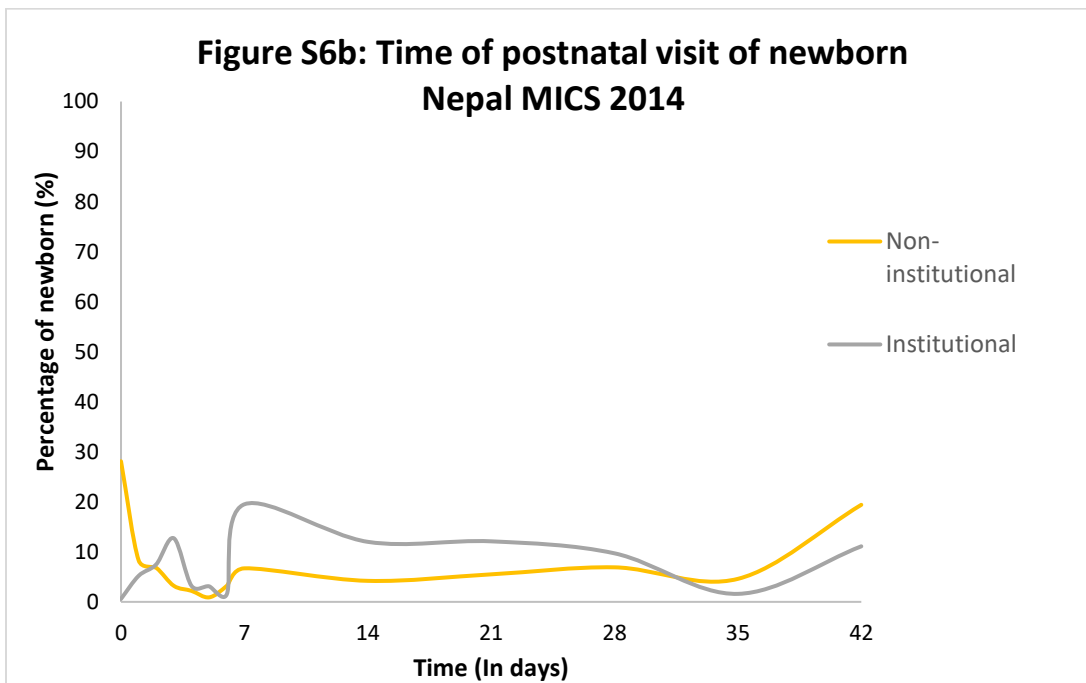




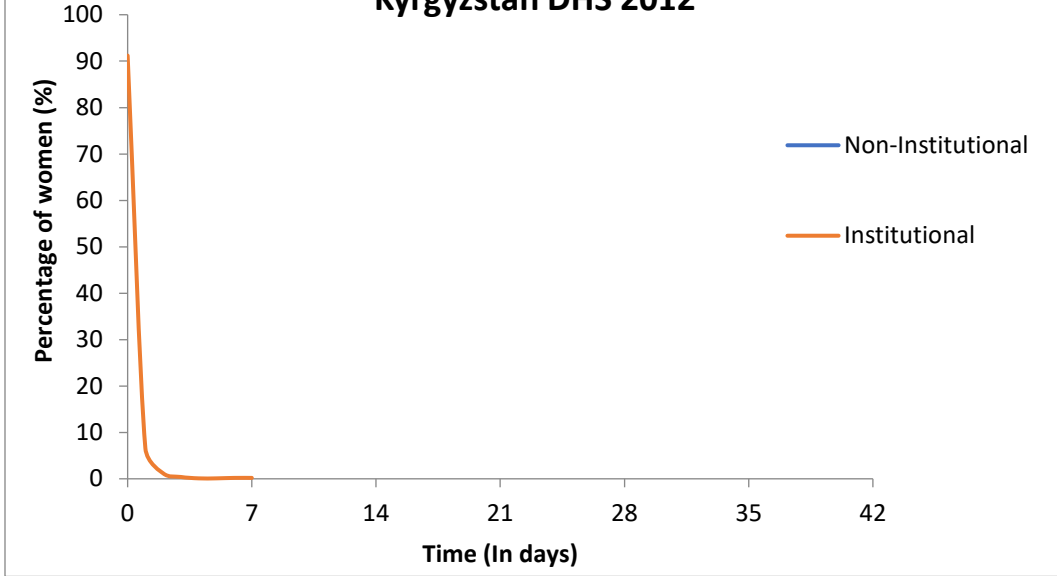
**Figure S6a: Time of postnatal visit of women
Nepal MICS 2014**



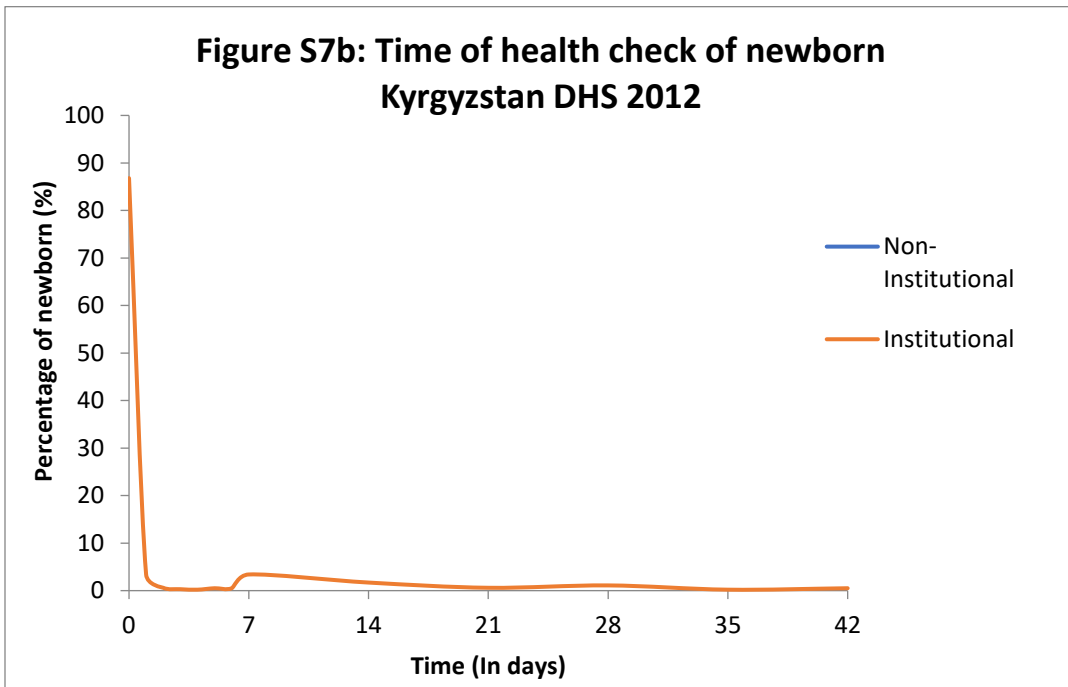
**Figure S6b: Time of postnatal visit of newborn
Nepal MICS 2014**



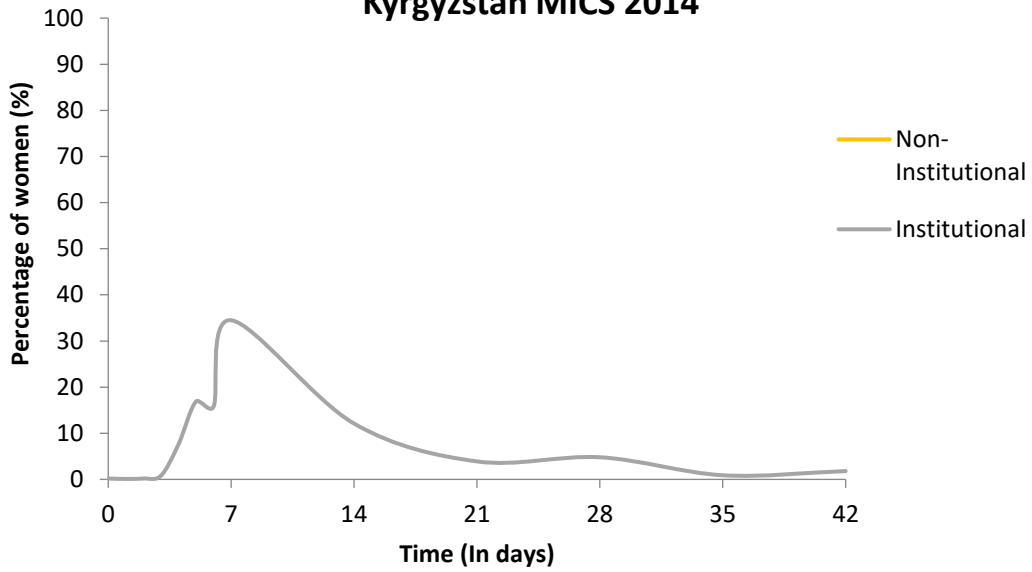
**Figure S7a: Time of health check of women
Kyrgyzstan DHS 2012**



**Figure S7b: Time of health check of newborn
Kyrgyzstan DHS 2012**



**Figure S8a: Time of postnatal visit of women
Kyrgyzstan MICS 2014**



**Figure S8b: Time of postnatal visit of newborn
Kyrgyzstan MICS 2014**

