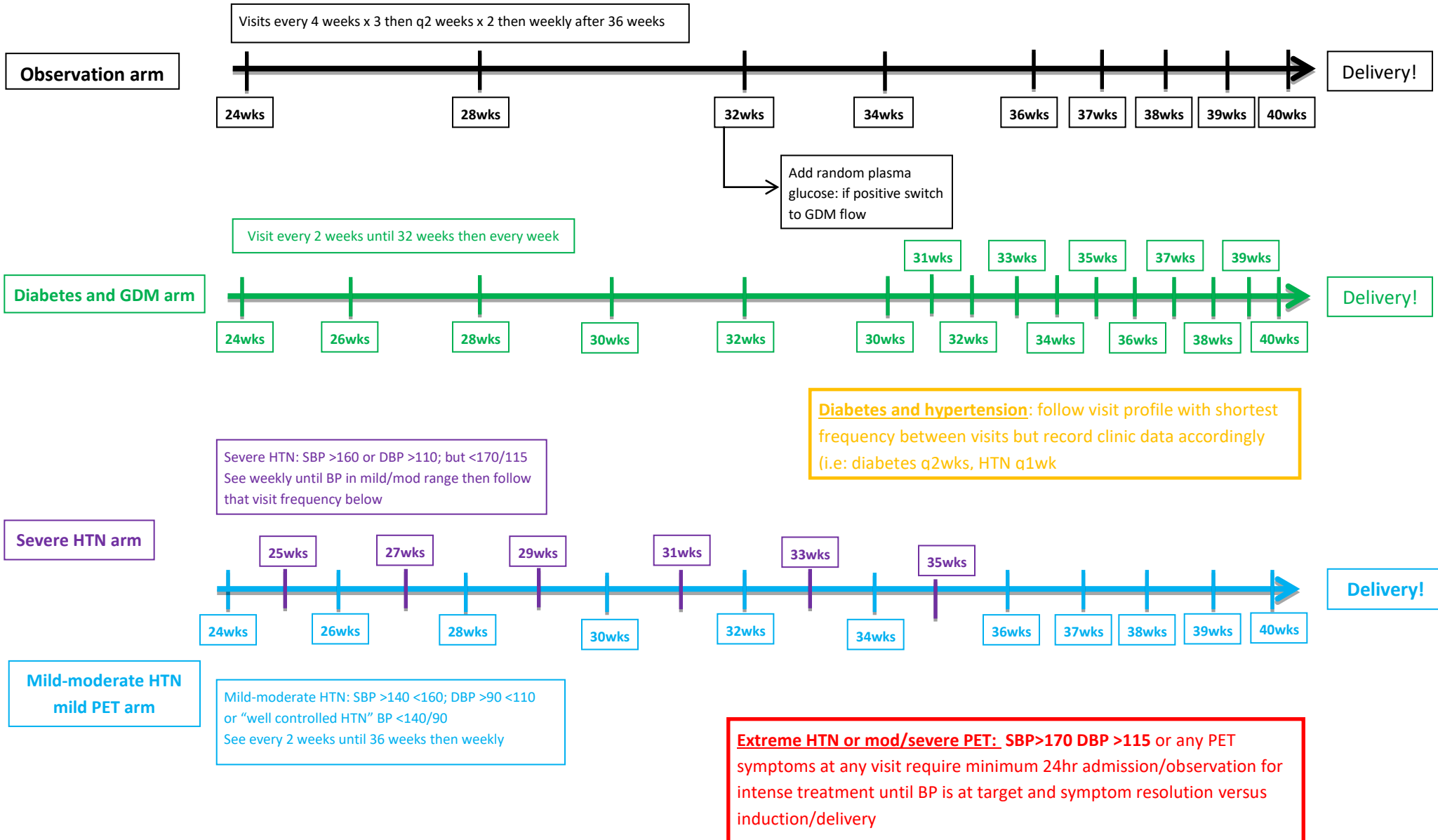


Supplementary Appendix S1: Visit Frequency based on diagnosis

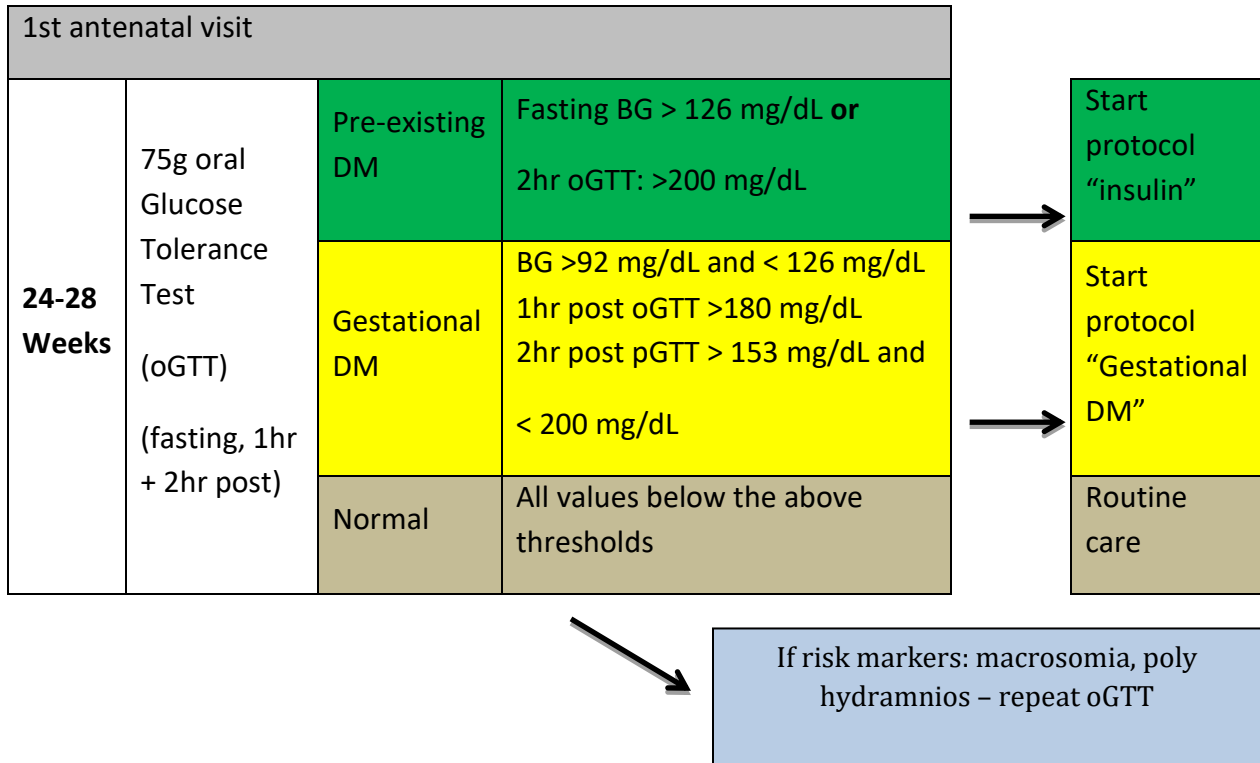
Initial visit: classification at >24 weeks

1. Observation arm (no HTN no DM)
2. Diabetes (GDM/DM)
3. Hypertensive arm (mild/mod, severe)



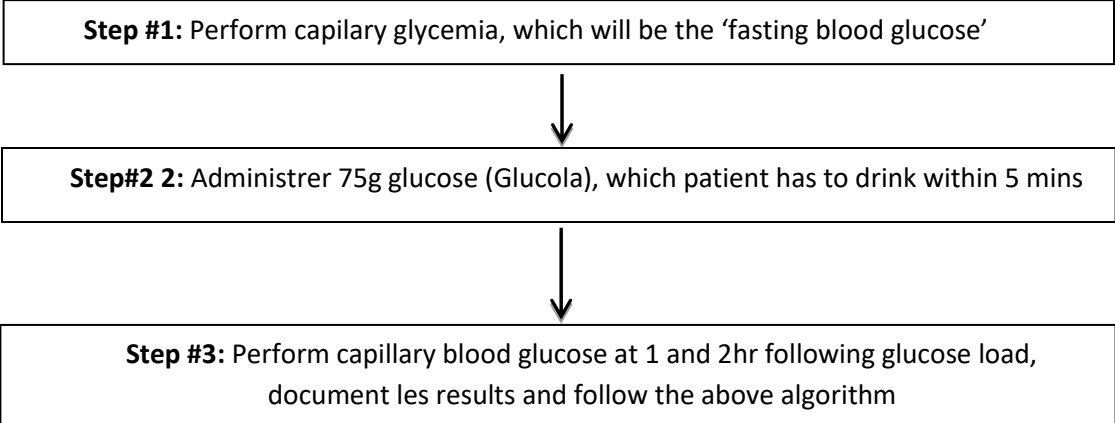
Supplementary Appendix D2: Diabetes Mellitus diagnosis, classification and treatment protocols

Diagnosis and Classification of Diabetes Mellitus type at 1st antenatal visit (24 to 28 weeks)

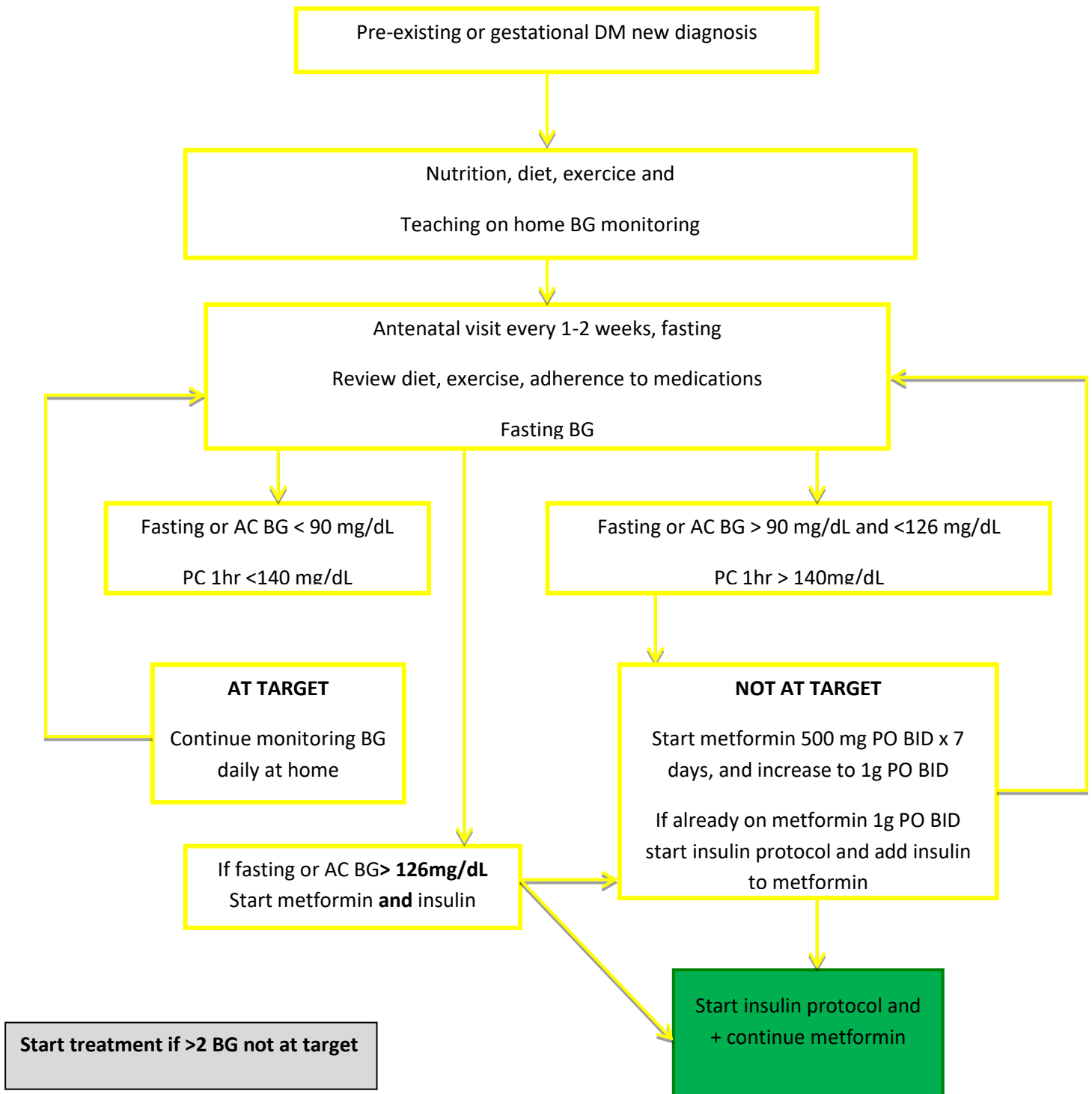


75g oGTT - Algorithm :

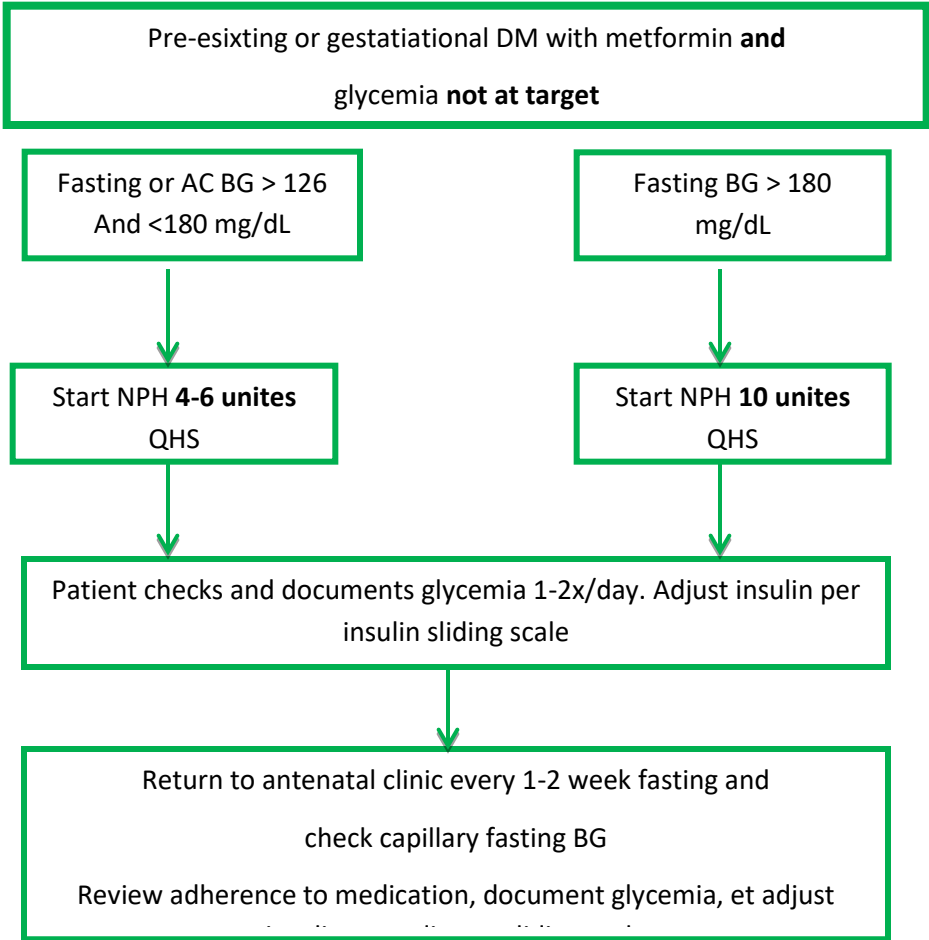
- Ensure that patient has been fasting for > 8 hrs (1 night). Document hour of last meal
- Advise patient that she cannot eat, drink, or smoke while the test is ongoing
- If patient not fasting, she can come back for testing on the following day or week



TREATMENT PROTOCOL WITHOUT INSULIN



TREATMENT PROTOCOL WITH INSULIN



INSULIN SLIDING SCALE

HUMULIN R BEFORE MEALS AND NPH AT BEDTIME

If Glycemia prior to breakfast:

>140	Add 6 units to the NPH dose taken at bedtime
116-140	Add 4 units to the NPH dose taken at bedtime
100-115	Add 2 units to the NPH dose taken at bedtime
91-100	Add 1 units to the NPH dose taken at bedtime
80-90	Prenez la même dose de NPH prise la nuit précédente
<80	Or nighttime hypoglycemia— reduce the NPH dose taken on the night before by 2 units

Si la glycémie 1 heure après le petit-déjeuner est :

>170	Add 2 units to the dose of Humulin R before breakfast
141-170	Add 1 units to the dose of Humulin R before breakfast
110-140	Take the same dose of Humulin R as taken at breakfast on the preceding day
<110	Or morning hypoglycemia— reduce the Humulin R dose taken at breakfast by 2 units

Si la glycémie 1 heure après le déjeuner est :

>170	Add 2 units to the dose of Humulin R before lunch
141-170	Add 1 unit to the dose of Humulin R before lunch
110-140	Take the same dose of Humulin R as taken at lunch on the preceding day
<110	Or afternoon hypoglycemia— reduce the Humulin R dose taken at lunch by 2 units

Si la glycémie 1 heure après le dîner est :

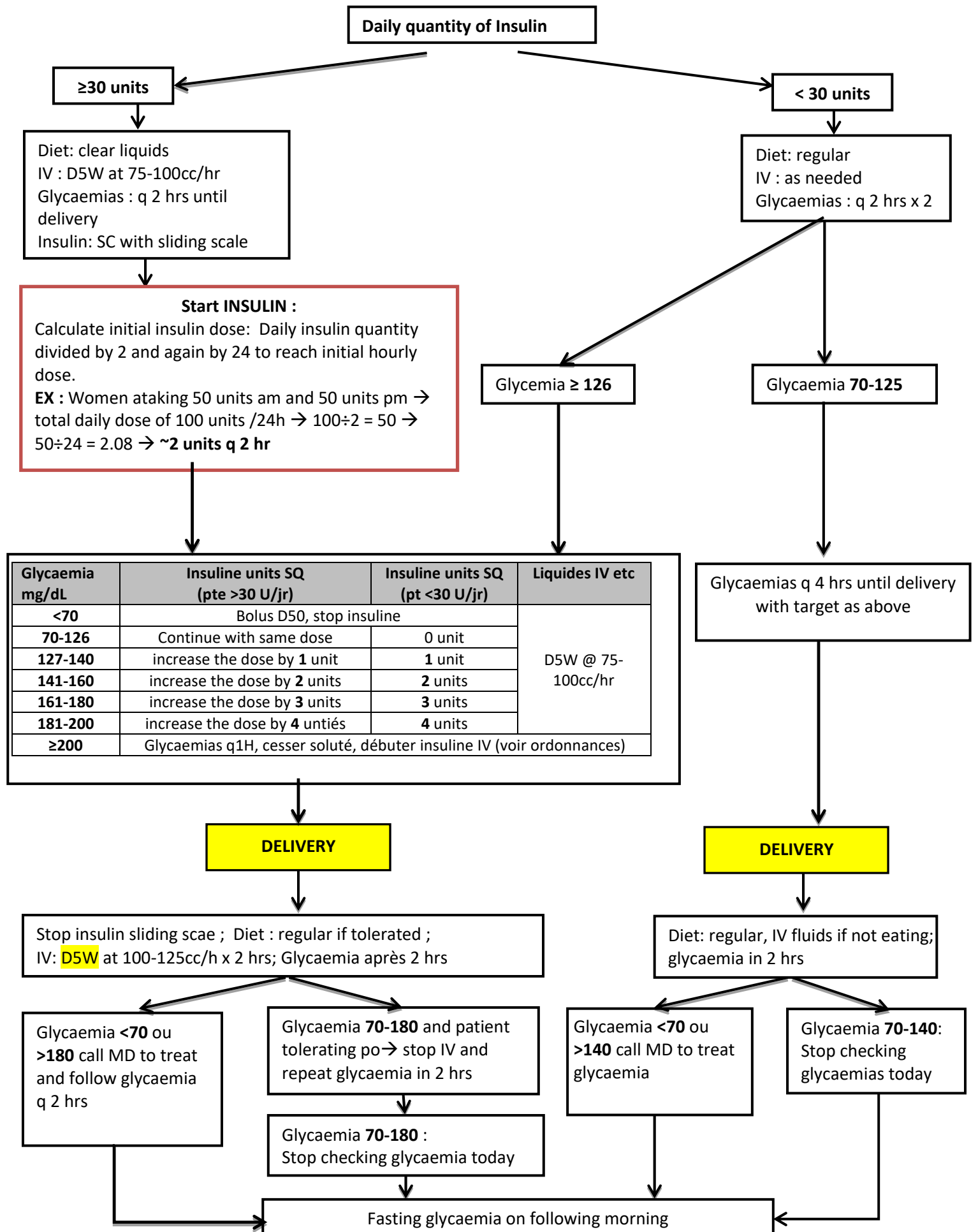
>170	Add 2 units to the dose of Humulin R before diner
141-170	Add 1 to the dose of Humulin R before diner
110-140	Take the same dose of Humulin R as taken at diner on the preceding day
<110	Or evening hypoglycemia— reduce the Humulin R dose taken at diner by 2 units

****If elevated BG because of excess snack or meal with too much carbohydrates, correct the provoking factor and keep the same insulin dose.**

Target blood glucose:

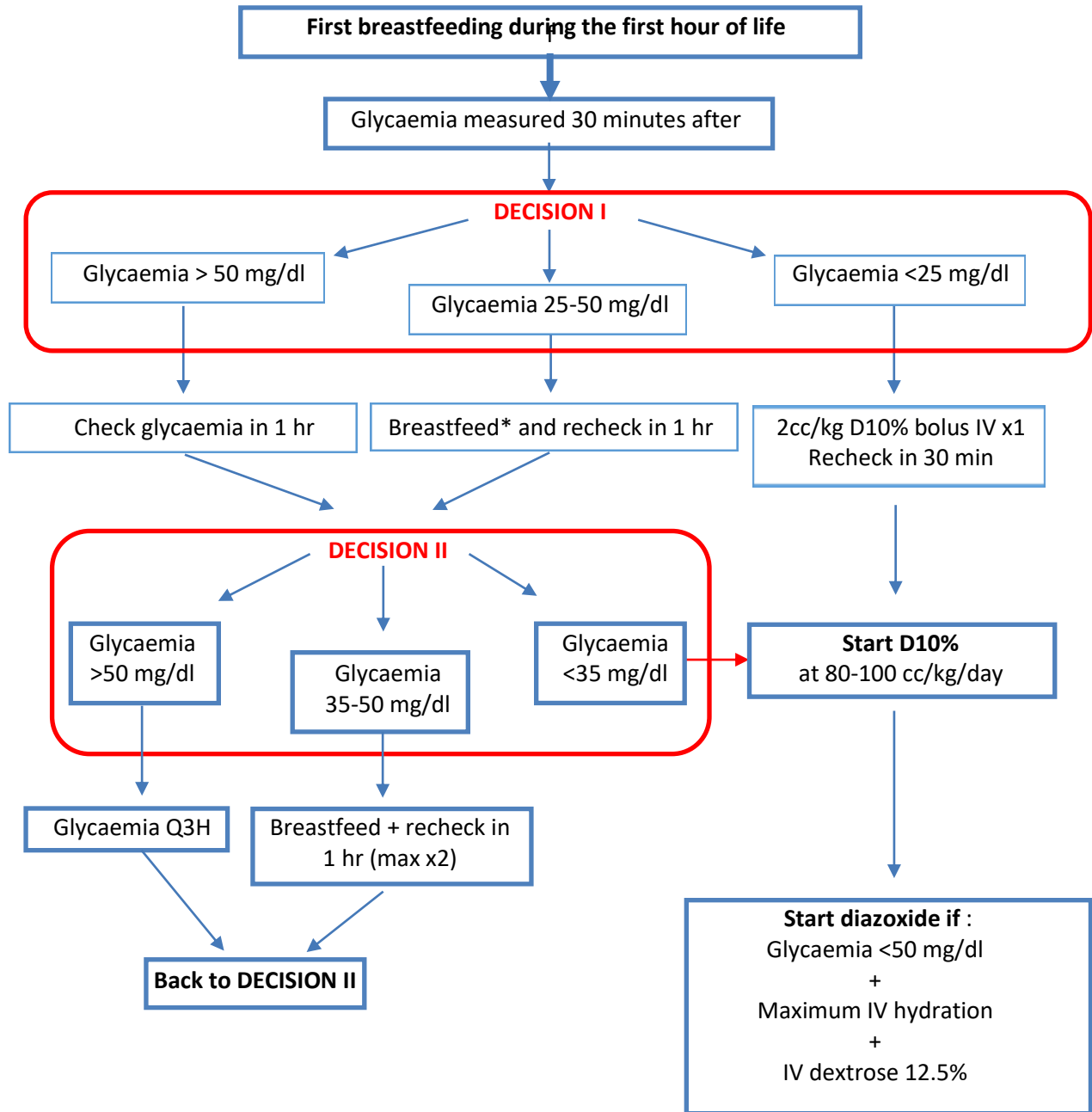
Fasting:	80-90 mg/dL
1h after meal	110-140 mg/dL

Supplementary Appendix S3: Intrapartum Diabetes Management Protocol



Supplementary Appendix S4: Neonatal Hypoglycemia Protocol

Duration of monitoring : 24 hours



*Clinical judgement to decide whether maternal or formula milk indicated

Supplementary Table S1. Missing values in baseline characteristics across group categories

Variable	Control N=544 n (%)	DM N=51 n (%)	HDP N=90 n (%)	DM/HDP N=30 n (%)
Gestational age at initial visit	4 (0.7)	0	1 (1.1)	0
Age	7 (1.3)	0	2 (2.2)	0
BMI	10 (1.8)	2 (3.9)	1 (1.1)	0
Prior pregnancies	2 (0.4)	0	0	1(3.3)
Live children	1 (0.3)	0	1 (1.7)	0
Matrimonial status	1 (0.2)	0	0	0
Education length	0	1 (2.0)	0	0
House built with concrete, n (%)	3 (0.6)	0	0	0
Food insecurity, n (%)	5 (0.9)	0	0	0
Current smoker, n (%)	3 (0.6)	0	0	0
Current alcohol use, n (%)	3 (0.6)	0	0	0
Comorbidities				
One elevated blood pressure in lifetime, n (%)	3 (0.6)	0	1 (1.7)	0
Preexisting diabetes, n (%)	3 (0.5)	0	0	0
Obstetrical history				
Gestational hypertension, n (%)	3 (1.0)	0	0	0
Preeclampsia, n (%)	3 (1.0)	0	0	0
Prior testing for gestational diabetes, n (%)	8 (2.5)	0	0	0

BMI= Body mass index, DM = Diabetes Mellitus, HDP = Hypertensive disorder of pregnancy,
SD= Standard deviation

Supplementary Table S2. Missing values in maternal and neonatal outcomes results

Total (N=422)	Controls N=282 Missing n (%)	DM N=37 Missing n (%)	HDP N=79 Missing n (%)	DM/HDP N=25 Missing n (%)
Gestational age at delivery	168 (59.6)	24 (64.9)	45 (57.7)	17(68.0)
Maternal blood glycemia	--	36 (97.3)	--	23 (92.0)
Maternal blood pressure				
Systolic BP	61 (21.6)	12 (32.4)	8 (10.2)	4 (16.0)
Diastolic BP	61 (21.6)	12 (32.4)	8 (10.2)	4 (16.0)
Preeclampsia, n (%)	49 (17.4)	9 (24.3)	5 (6.4)	4 (16.0)
Eclampsia, n (%)	49 (17.4)	9 (24.3)	6 (7.7)	4 (16.0)
Delivery mode	35 (12.4)	6 (16.2)	3 (3.8)	4 (16.0)
Small for gestational age, n (%)	174 (61.7)	24 (64.9)	46 (58.9)	17 (68.0)
Large for gestational age, n (%)	174 (61.7)	24 (64.9)	46 (58.9)	17 (68.0)
Birth weight (n=362)	44 (15.6)	7 (18.9)	4 (5.1)	5 (20.0)
Obstetrical complications	40 (14.1)	7 (18.9)	5 (6.4)	4 (16.0)
Neonatal hypoglycemia, n (%)	n/a	12 (32.4)	55 (70.5)	7 (28.0)
Intravenous dextrose, n (%)	-	0	-	1 (50)
Neonatal complications	45 (16.0)	6 (16.2)	3 (3.8)	3 (12.0)

BP= Blood pressure, DM= Diabetes mellitus, HDP= Hypertensive disorders of pregnancy, SD= Standard deviation